

**FIGNL1 Antibody (N-term)**  
**Affinity Purified Rabbit Polyclonal Antibody (Pab)**  
**Catalog # AP17687a**

**Specification**

---

**FIGNL1 Antibody (N-term) - Product Information**

Application	WB,E
Primary Accession	<a href="#">Q6PIW4</a>
Other Accession	<a href="#">NP_001036227.1</a>
Reactivity	Human
Host	Rabbit
Clonality	Polyclonal
Isotype	Rabbit IgG
Calculated MW	74077
Antigen Region	12-40

**FIGNL1 Antibody (N-term) - Additional Information**

**Gene ID** 63979

**Other Names**

Fidgetin-like protein 1, 364-, FIGNL1

**Target/Specificity**

This FIGNL1 antibody is generated from rabbits immunized with a KLH conjugated synthetic peptide between 12-40 amino acids from the N-terminal region of human FIGNL1.

**Dilution**

WB~~1:1000

E~~Use at an assay dependent concentration.

**Format**

Purified polyclonal antibody supplied in PBS with 0.09% (W/V) sodium azide. This antibody is purified through a protein A column, followed by peptide affinity purification.

**Storage**

Maintain refrigerated at 2-8°C for up to 2 weeks. For long term storage store at -20°C in small aliquots to prevent freeze-thaw cycles.

**Precautions**

FIGNL1 Antibody (N-term) is for research use only and not for use in diagnostic or therapeutic procedures.

**FIGNL1 Antibody (N-term) - Protein Information**

**Name** FIGNL1

**Function** Involved in DNA double-strand break (DBS) repair via homologous recombination (HR).

Recruited at DSB sites independently of BRCA2, RAD51 and RAD51 paralogs in a H2AX-dependent manner. May regulate osteoblast proliferation and differentiation (PubMed:[23754376](#)). May play a role in the control of male meiosis dynamic (By similarity).

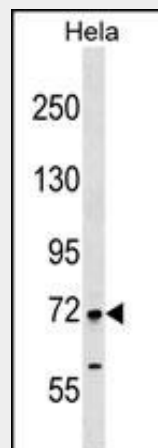
**Cellular Location**

Nucleus. Cytoplasm {ECO:0000250|UniProtKB:Q8BPY9}. Cytoplasm, perinuclear region {ECO:0000250|UniProtKB:Q8BPY9}. Note=Together with RAD51 and a subset of H2A histone proteins, redistributed in discrete nuclear DNA damage- induced foci after ionizing radiation (IR) treatment (PubMed:23754376)

**FIGNL1 Antibody (N-term) - Protocols**

Provided below are standard protocols that you may find useful for product applications.

- [Western Blot](#)
- [Blocking Peptides](#)
- [Dot Blot](#)
- [Immunohistochemistry](#)
- [Immunofluorescence](#)
- [Immunoprecipitation](#)
- [Flow Cytometry](#)
- [Cell Culture](#)

**FIGNL1 Antibody (N-term) - Images**

FIGNL1 Antibody (N-term) (Cat. #AP17687a) western blot analysis in HeLa cell line lysates (35ug/lane). This demonstrates the FIGNL1 antibody detected the FIGNL1 protein (arrow).

**FIGNL1 Antibody (N-term) - Background**

FIGNL1 may regulate osteoblast proliferation and differentiation (By similarity).

**FIGNL1 Antibody (N-term) - References**

de Krom, M., et al. Biol. Psychiatry 65(7):625-630(2009)  
Matsuoka, S., et al. Science 316(5828):1160-1166(2007)